

D4s THE SPEED TO SUCCEED.
OWN THE DECISIVE MOMENT.

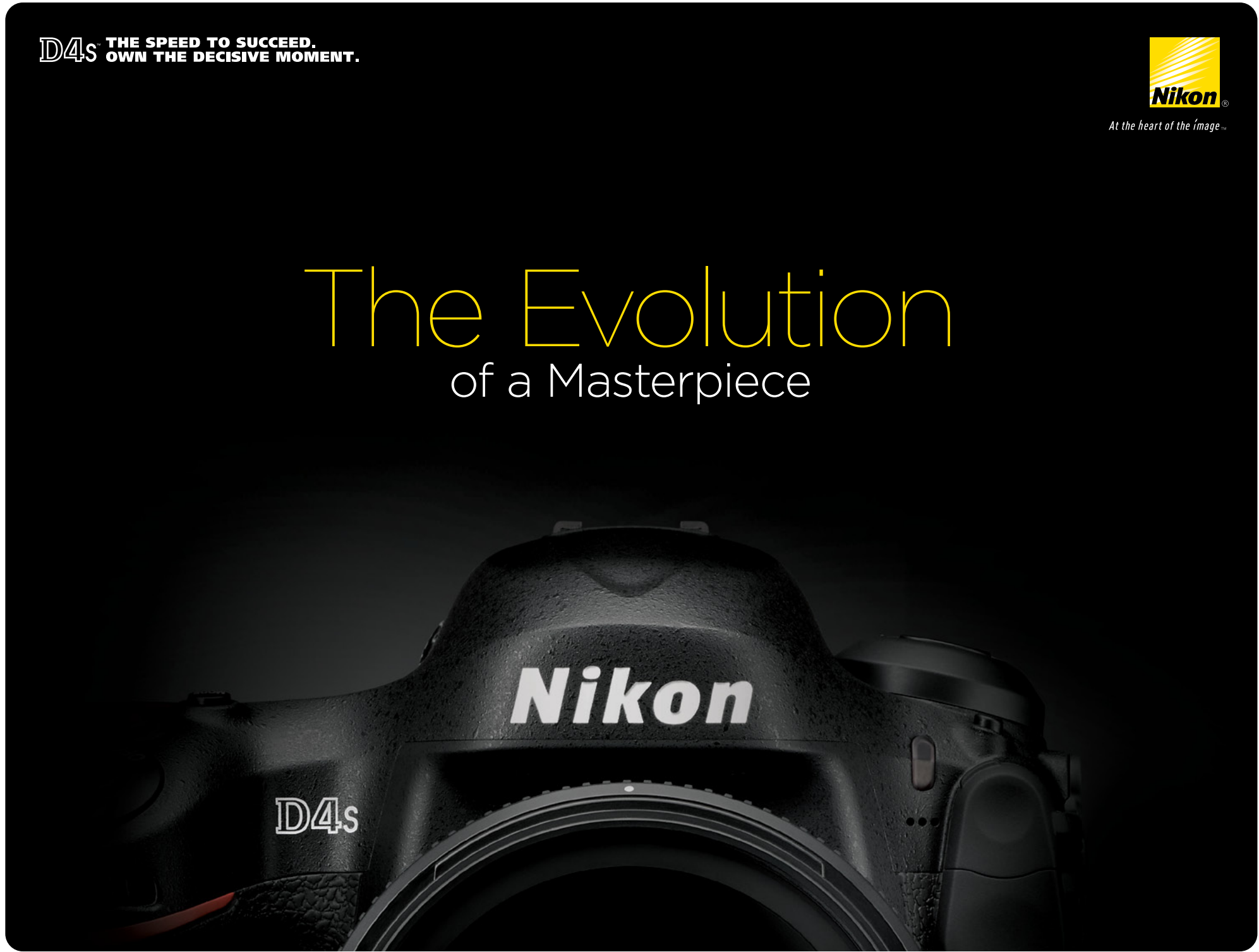


At the heart of the image™

The Evolution of a Masterpiece

D4s

Nikon



What's Inside

THE BAR HAS BEEN RAISED	3
IMPROVED SPEED AND PERFORMANCE WITHOUT SACRIFICE	4
WHAT'S NEW?	5
STUNNING VIEWS OF DECISIVE MOMENTS	6
SUPER-CHARGED EXPEED 4 IMAGE PROCESSING	7
UNBEATABLE AF ACCURACY AND VERSATILITY	8
GROUP-AREA AF MODE	9
RAW SIZE S	10
FASTER IMAGE TRANSMISSIONS	11
MULTIMEDIA POWERHOUSE	12
IMPROVED DESIGN, CONTROL AND COMFORT	15
DURABILITY AND RELIABILITY	18
THE CENTERPIECE OF AN EXCEPTIONAL SYSTEM	19
OPTICAL MASTERPIECES: NIKKOR LENSES	21
LINK TO PRODUCT PAGE	22

The bar has been raised

The course of modern photography has been forged by the talent and ingenuity of working field professionals and by the introduction of a few cameras so innovative and forward thinking, they redefined what's possible. The Nikon D4 has been such a camera—a pinnacle of HD-SLR innovation that has freed pros to perform at thrilling new levels. And now the D4S proves that a great thing really can get better. With remarkable enhancements through the entire workflow, dazzling new levels of speed, performance and ISO sensitivity and, of course, the superior image quality of a Nikon HD-SLR camera, the D4S will inspire your greatest performances yet.



Improved speed and performance without sacrifice

How do you make a revolutionary camera better? Improve its speed, precision and efficiency without sacrificing the features that make it exceptional. The D4S builds on the success of the D4 with 30% faster image processing than its predecessor. Substantial energy savings allow you to capture up to 3,020 stills (CIPA) on a single charge and an extended ISO range from ISO 100-25,600 (expandable down to ISO 50 Lo1 and up to ISO 409,600 Hi4) gives you enhanced noise reduction, improved tonal range and smoother gradations.

Additional frame rate options are available for recording video at 60p and faster burst rates. Shoot 11 fps for approximately 200 shots at full resolution with Auto Exposure (AE) and Auto Focus (AF) functionality. For faster initial subject capture, use five AF sensors as a single focus point with the new Group Area AF setting. Transfer files faster than the D4 with new 1000 Base-T (Gigabit) wired LAN, and increase that speed further by shooting a new smaller RAW SIZE S format. Perform at your peak—the D4S will keep up.



What's new?

IMAGE QUALITY

- 16.2 MP Nikon FX-format CMOS Image Sensor
- Standard ISO 100 to 25,600, expandable down to ISO 50 (Lo1) and up to ISO 409,600 (Hi4) equivalent
- ISO 200 to 409,600 for Full HD Video
- EXPEED 4 Image Processing
 - Higher Speed—30% faster processing capability than D4
 - Higher Image Quality
- Improved White Balance
- Improved Exposure Accuracy
- Improved Picture Controls:
 - More natural skin tones
 - Reduced color cast

SPEED

- 11 frames per second with Auto Focus and Auto Exposure for up to 200 shots (JPEG)
- Group Area AF for when a subject cannot be tracked with a single selected AF point

WORKFLOW

- Improved Workflow:
 - RAW SIZE S (12 bit, uncompressed) file format is employed to ensure higher-speed workflow
 - Data transmission speed with wired LAN is enhanced: 1000 Base-T support

VIDEO

- Full HD 1920 x 1080p
 - Compatible with 1080: 60p/50p (including output to an external recorder under limited conditions)
 - Image area can be selected during movie live view: FX/DX/2.7X crop
 - ISO Auto for Manual Exposure
 - Simultaneous recording from HDMI port and to internal memory cards
 - Audio level adjustable during recording
 - Refined interval timer/Time lapse function up to 9999

CAMERA HANDLING

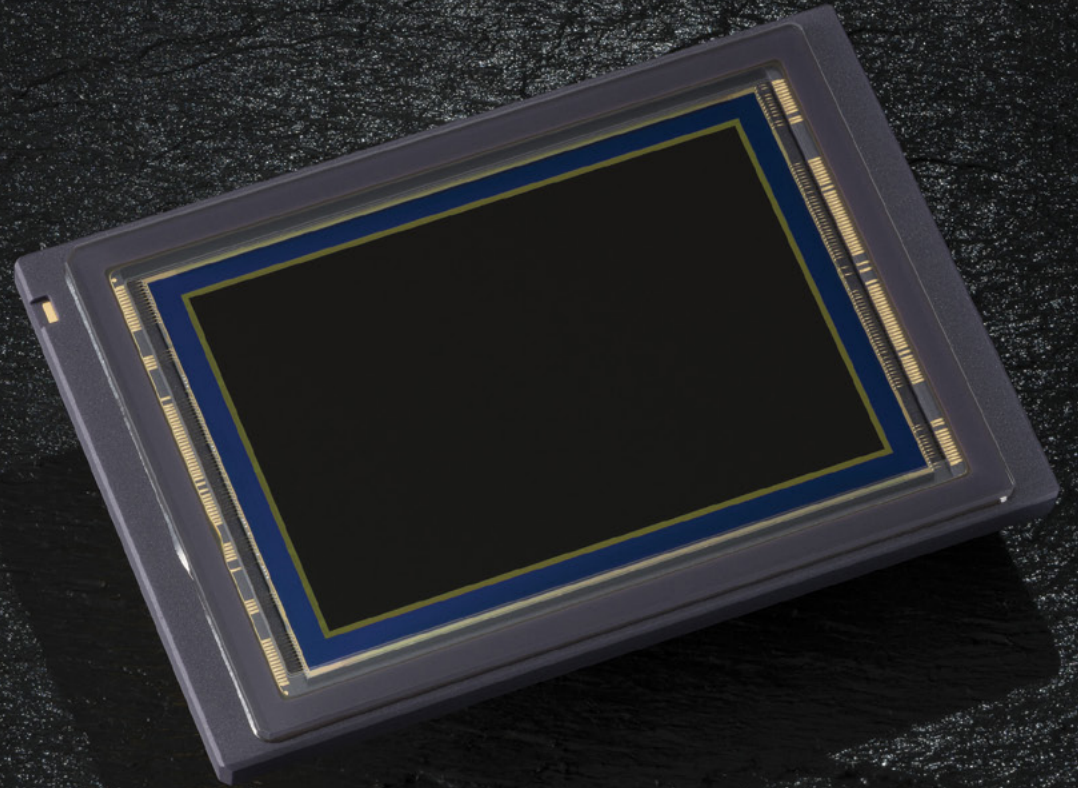
- Dual Memory Card Slots; CF (UDMA7)/XQD
 - Improved XQD performance
- Improved Handling and Ergonomics
 - Improved playback magnification
 - Redesigned shape of grip and improved details on the backside (body form and controls)
 - Size of focus point in Normal-area AF mode during movie live view (including recording) can be reduced (same with still-image live view)
 - Enabled preset focus point: in 51-point dynamic-area AF, resetting to a desired point
 - Employed color customize function enables adjustment of the monitor color tone
 - Improved display of LCD monitor, top control panel, rear control panel and viewfinder



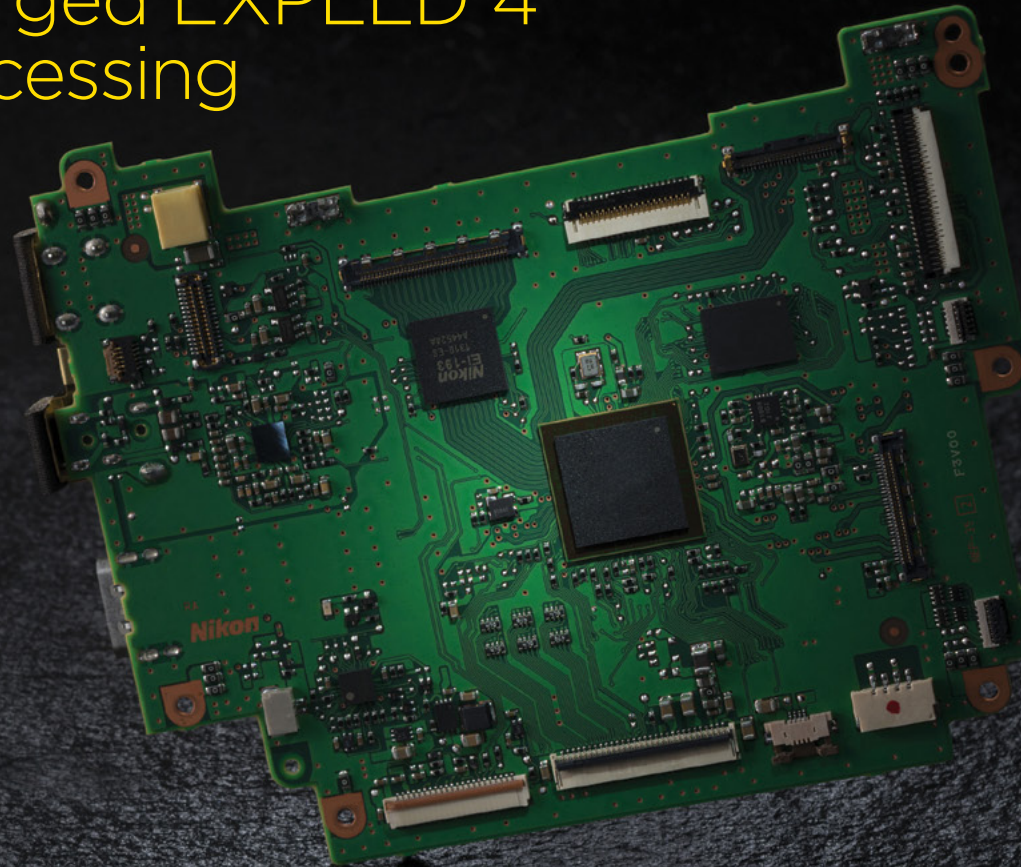
IMAGE QUALITY

Stunning views of decisive moments

The newly designed FX-format CMOS image sensor offers 16.2 megapixels of resolution and a remarkably wide light sensitivity range: ISO 100 to 25,600 as standard without sacrificing dynamic range, which can be expanded to the equivalents of ISO 50 to 409,600. The perfect accompaniment to such a sensor is the NIKKOR® line of lenses. Unmatched in sharpness, clarity and accuracy, each lens draws out the full potential of the D4S's sensor in diverse lighting conditions. The powerful EXPEED 4 image-processing engine receives 14-bit A/D converted data from the sensor and conducts a comprehensive 16-bit processing to maintain your image information's peak richness without losing speed. The exceptional Picture Control System, which delivers images that are exemplary of Nikon's highest standards, also allows professionals to define their own look by controlling a variety of imaging parameters both in stills and video.



Super-charged EXPEED 4 image processing



The versatile Auto White Balance (AWB) and convenient Spot White Balance delivers accuracy for faithful, well-saturated color, natural depth and subtle, nuanced tones from pitch black all the way to snow white.

The D4S's EXPEED 4 image processor enables 30% faster processing than D4's EXPEED 3 image processor with a burst rate of 11 fps with AE/AF and is energy efficient up to 3,020 shots.

The D4S's image sensor and EXPEED 4 image processor are optimized for video and work hand-in-hand to render a natural transition between bright and dark scenes, all while delivering rich tones, sharp edges and minimized noise, even at high ISOs.

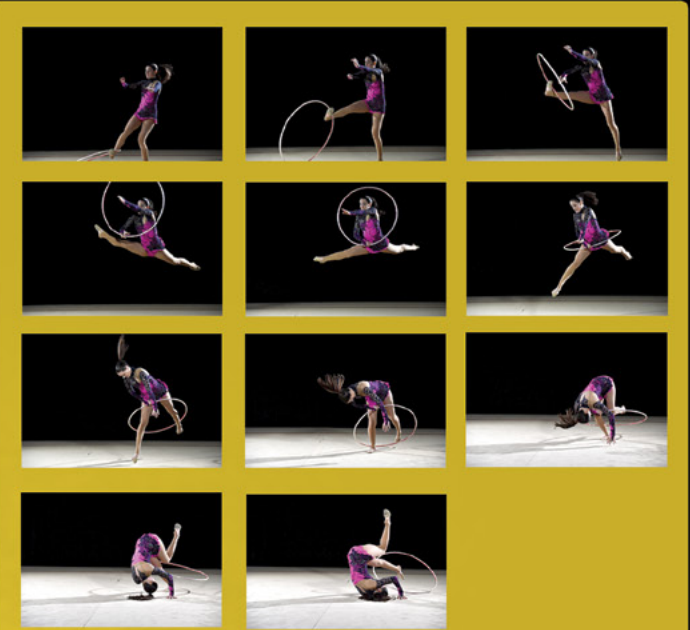
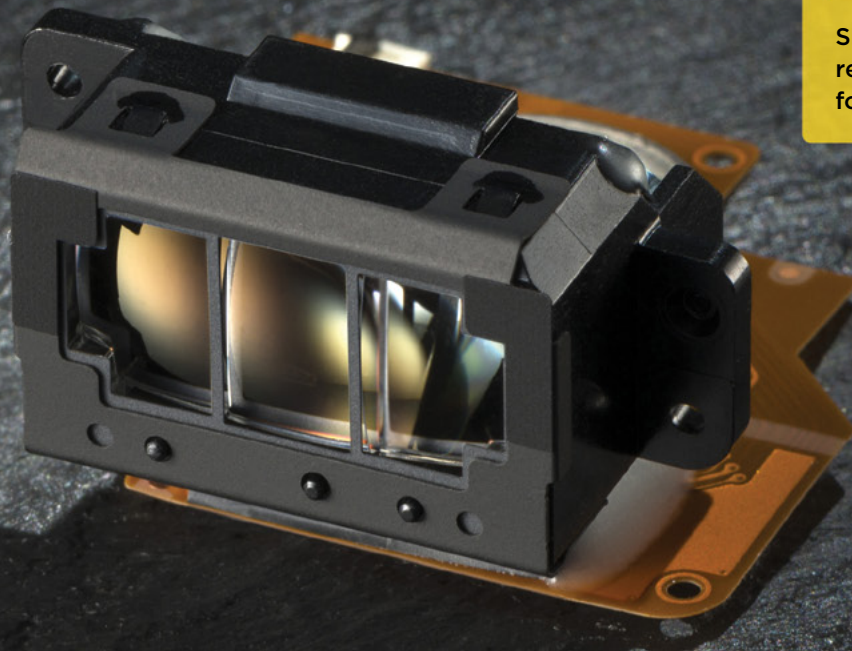
Image quality is preserved at high ISO settings. Your images will retain deeper tones, a healthier saturation and an overall bolder look.

The powerful EXPEED 4 image-processing engine incorporates an entirely new algorithm for even higher ISO (100-25,600 up to Hi4 (409,600)) resulting in an enhanced at-a-glance overall sharpness and clarity without sacrificing subtle textures and luminous details.

SPEED

Unbeatable AF accuracy and versatility

The D4S's Multi-CAM 3500FX Autofocus Sensor Module has thoroughly recalibrated AF algorithms to quickly zero in exactly where and how you intend it to—no matter how near, far, or abruptly your subject appears in the scene. Expect detection accuracy even for subjects in low-contrast situations, such as backlighting. The detected subject stays in constant focus, thanks to improved tracking capabilities. Imagine a speed skater hurtling toward you: the D4S lets you track the subject more confidently until the frame is filled into the striking composition you're looking to capture. The days of constantly shooting loose for safety are over. Plus the new Fast AF-area mode selection, via Super-telephoto NIKKOR AF activation button, helps optimize AF in any situation.



Shoot 11 fps for approximately 200 shots at full resolution with auto exposure (AE) and auto focus (AF) functionality.

Group-Area AF Mode

Versatile AF-area modes for varying professional needs

The D4S further empowers its flagship focusing versatility. In addition to the four time-tested modes (single-point AF, dynamic-area AF, 3D tracking, and auto-area AF) a fifth AF-area mode option has now been added. The new Group-area AF focuses on your desired subject more securely by using five AF points simultaneously like a net, in contrast to dynamic-area AF that uses one initial AF point. This can be extremely useful when targeting unpredictable subject matter that is hard to lock on to—all while avoiding an unintentional focus on the background. In situations where the background is bright with strong contrasts, photographers can now feel more confident, knowing that small, distant and fast-moving objects can be rendered sharper, faster and more frequently.



WORKFLOW

RAW SIZE S

If you need both post-production enhancement and speed, the D4S lets you shoot in RAW S* (12 bit, uncompressed), which has a quarter of the resolution and half the file size of uncompressed RAW L. Sharpness and noise level are equivalent to JPEG S.



* In-camera RAW processing is not available. Not usable for image overlay.

Faster image transmissions

NEW Transfer files faster than the D4 with the new 1000 Base-T (Gigabit) built-in wired LAN connection

A professional's workflow is only complete once the image is delivered. To help achieve your objectives with speed, the D4S allows high-speed data transmission with a built-in wired LAN terminal that sends images in your preferred format (JPEG, RAW or TIFF) to an editor at speeds up to 185 Mbps. To save photographers the time-consuming chore of attaching attributes of each image (ie. author, theme, venues, etc.), the D4S lets you register IPTC data prior to the shoot.



Ethernet Cord optional



Compact and lightweight Wireless Transmitter WT-5A/B/C/D/E (optional) enables high-speed data transfer

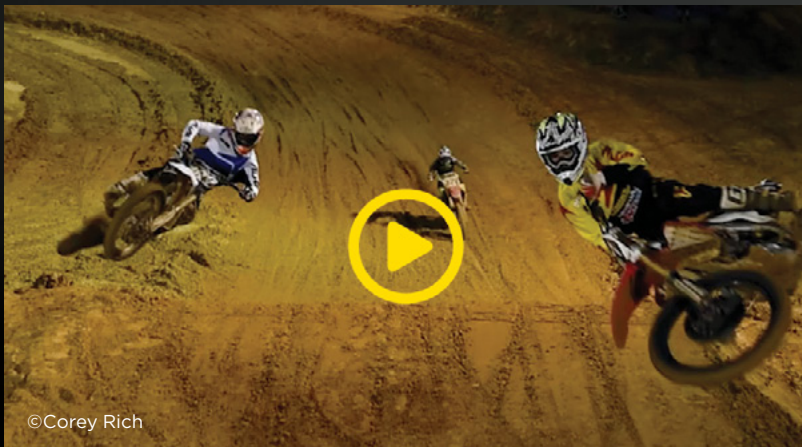
The compact module design is realized by dedicating it for wireless transmission and utilizing power from the camera body. It can be directly attached to a peripheral connector to greatly enhance handling capability. It supports IEEE 802.11n (1x1 HT40: max. 150 Mbps) in addition to IEEE 802.11a/b/g and enables data transmission substantially faster than the Wireless Transmitter WT-4A/B/C/D/E (optional).



VIDEO

Multimedia Powerhouse

Today's stories are being told through stills, video, audio and exciting combinations of each. The D4S is designed to enhance the way you tell these stories. The D4S reliably delivers amazing, broadcast-quality video with 1080/60p full HD capability packed onto its rugged body. The D4S's 60p frame rate delivers video with stunning sharpness and depth—even the small details are free from moiré and jagged edges.



DEDICATED

An amazing video by Corey Rich

The D4S is designed for crisp audio recording with a built-in external stereo microphone terminal. Attach the compact Stereo Microphone ME-1 (optional) to record high-quality sound while significantly reducing mechanical noise.



ME-1 External Stereo Microphone



VIDEO

Multimedia Powerhouse

Creative options for the D4S include the ability to shoot scenes with a shallow depth of field and even capture 2MP stills simultaneously while recording video. Simplify the editing process by tailoring the shutter release button to initiate/finish video recording and register index marking while you're recording. Plus, the 1920 x 1080 crop mode delivers stunning sharpness, without resizing; with an approx. 2.7x increase to the focal length.

With Auto ISO control, the D4S lets you maintain manual exposure for controlled shutter speeds and aperture settings while the camera automatically dictates the ISO for the correct exposure. Maximum sensitivity can be set from 400 to Hi4. For assignments with dramatic shifts in lighting, this can be a remarkably useful tool.



©Corey Rich

MAKING OF DEDICATED

A behind the scenes video by Corey Rich

An external headphone terminal enables use of headphones to effectively monitor and control audio in isolation.



Multimedia Powerhouse

Uncompressed video output via HDMI (requires optional HDMI cord and optional external recorder)

Video output can be recorded directly to an external storage device via HDMI interface during movie live view. This offers the purest uncompressed video output for professional quality editing. The video signal is also available simultaneously on an external monitor while using an HDMI connection.



NEW Simultaneous recording to internal memory cards and an external recorder

Thanks to the D4S's new sensor and EXPEED 4 image processing, it is now possible for simultaneous recording to the internal CF, or the speedy XQD cards and simultaneously to an external recorder for enhanced workflow of your footage.

Both are optional accessories

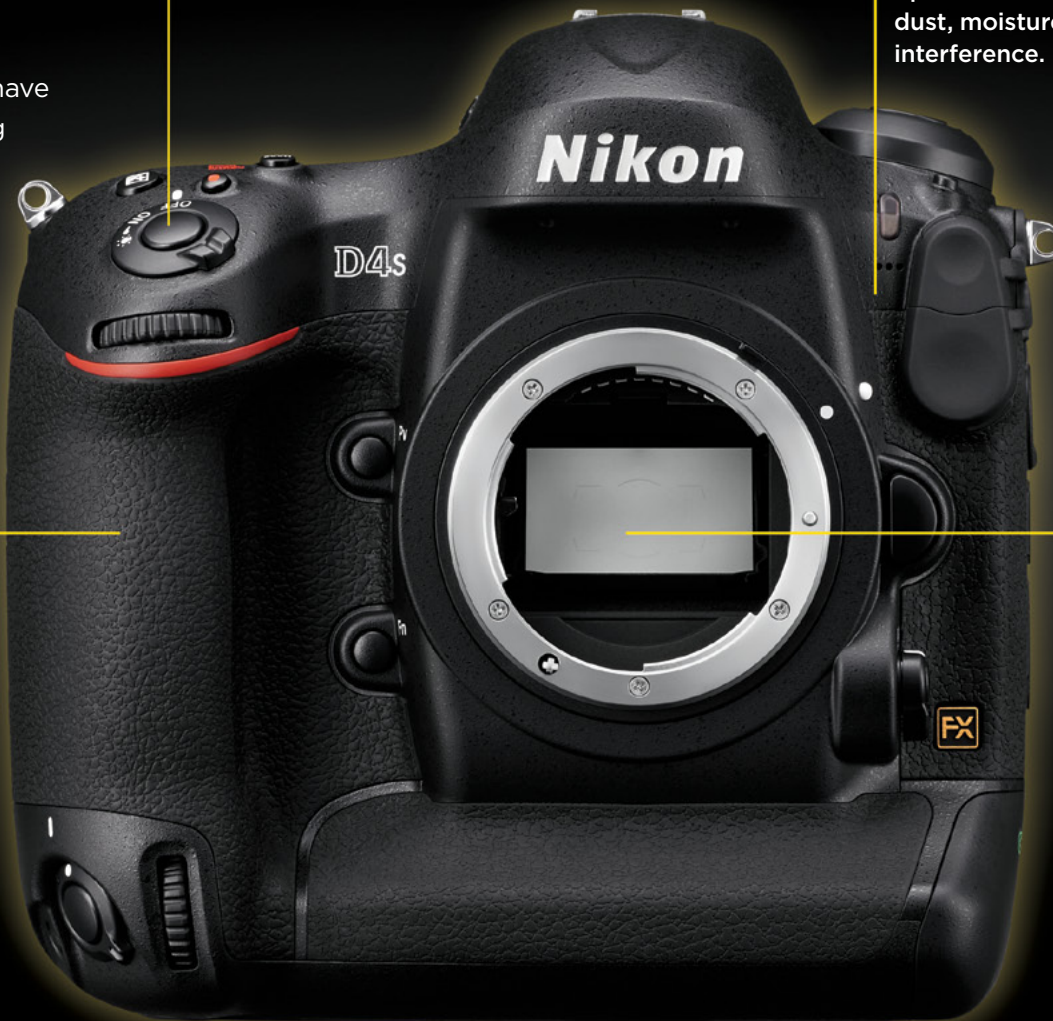
CAMERA HANDLING

Improved design, control and comfort

As the ultimate in professional gear, expect no compromise in camera durability. Nikon engineers worked closely with professionals to achieve optimal ergonomics with the D4, and the D4S improves upon that design. Several custom settings have been added or improved, making the D4S more intuitive to use.

The D4S's shutter has been tested to 400,000 cycles.

The lightweight, yet durable magnesium alloy body features careful weather sealing and has been optimized for resistance against dust, moisture and electromagnetic interference.



The grip has been reshaped, making the camera easier to hold for a wider range of hand sizes and more comfortable during prolonged use.

An improved mirror balancer provides better visibility in the viewfinder during high-speed continuous shooting and reduced mirror vibration.

Improved design, control and comfort

Like the D4, its large optical viewfinder offers 100% frame coverage and approximately 0.7X magnification for bright, clear views of your frame.

Sub-selectors incorporate new materials and surface designs for enhanced operability.

A larger card slot cover provides additional grip when shooting vertically or horizontally.

The AF-ON button for horizontal and vertical shooting has been slightly adjusted for better location and a more confident press.



Improved design, control and comfort

Many of the buttons on the rear are illuminated for easier adjustments in low-light situations.



Durability and Reliability

To sustain peak performance in the most demanding environments, the D4S's body, exterior and mirror box are comprised of strong yet lightweight magnesium alloy. Thorough measures are taken to seal and protect against invasive moisture, dust and electromagnetic interference.



Magnesium Alloy

The D4S body is comprised of strong yet durable magnesium alloy.



Weather Seals

Thorough measures have been taken to seal and protect against invasive moisture.

SYSTEM

The centerpiece of an exceptional system

The strength of a camera is influenced by the quality of its peripheral components—lenses, flashes, accessories and software—and Nikon's imaging system is second to none.



NIKKOR Lenses



GP-1 GPS Unit

With the optional GP-1/GP-1A GPS Unit, you can store image information such as latitude, longitude, altitude and Universal Coordinated Time (UTC) as EXIF data on any D4S image. Such images can be displayed on the GeoTag workspace of ViewNX 2 (supplied with the D4S), and this information can also be used on Nikon's image-sharing and storage service NIKON IMAGE SPACE, as well as other online image-sharing services or digital mapping software on the market.



Capture NX2 Software

Nikon Software provides photographers with excellent tools for tethering, managing images, editing and post-production work and more.



Nikon Creative Lighting System

Nikon Creative Lighting System: studio-level lighting, virtually anywhere

Portable Nikon Speedlights (optional) can turn any location into your own personal studio. Using the diverse array of CLS flash features can add more depth and dynamism to your images. The Advanced Wireless Lighting System gives you precise control of remote flash units: control up to three groups of Speedlights, with an unlimited number of units in each group.



SYSTEM

The centerpiece of an exceptional system

A growing collection of accessories like the WT-5A/B/C/D/E Wireless Transmitter, WR-1 Wireless Remote Control, WR-R10 and WR-T10 Controller and Transmitter and so much more extend the capabilities of the D4S in thrilling new ways.



WR-A10 Wireless Remote Adapter



WT-5A Wireless Transmitter



WR-1 Wireless Remote Controller



WR-R10 Wireless Remote Controller (transceiver)



WR-T10 Wireless Remote Controller (transmitter)

The WR-1 and WR-R10/ WR-T10 Wireless Remote Controllers enable remote control over long distances by utilizing the 2.4-GHz radio frequency band, and can be used to trigger the shutter even when obstacles such as trees stand in the way.

Optical masterpieces: NIKKOR lenses

For over 80 years, legendary NIKKOR lenses have set the bar for quality in optics. To bring out the full potential of the D4S, look no further than the vast array of NIKKOR lenses designed and tested to match the D4S's resolution and image integrity with sharpness, accuracy and field proven reliability.

Trusted by both still photographers and video professionals, NIKKOR lenses are held in the highest regard across the industry. The incredible variety of NIKKOR lenses gives you an unbeatable array of options to find the most suitable lens for both still and video usage, so you can get the very best quality image in any shooting situation.

- Exceptional sharpness, from the image center to the peripherals
- Sharp resolution that renders a point light source as point
- Smooth transitions from sharp focus to soft bokeh, faithfully defining three-dimensional space in your images
- Image clarity free from ghost and flare in difficult lighting



D4s THE SPEED TO SUCCEED.
OWN THE DECISIVE MOMENT.



At the heart of the image™

 [MORE INFORMATION](#)



 [BACK TO TOC](#)